

## Benefits at a glance

- **Unprecedented reach:** Colt has Dark Fibre available to more than 27,500 buildings - including direct fibre connections to around 850 data centres in Europe and Asia - more than any other carrier
- **Ultimate flexibility:** Dark Fibre solutions give you the freedom to deploy and manage the technology of your choice, and give you complete control over configuration
- **Privacy and security:** Your network is physically dedicated to your business, and is not shared at any point. This provides you with ultimate peace of mind and can help demonstrate regulatory compliance - your network is 100% private
- **Diversity:** We understand the importance of network route diversity - our business is to protect your business. We will work with you to design a Dark Fibre network which is geographically diverse from other routes you may currently use, or provide a secondary diverse path
- **Extensive, wholly owned fibre footprint:** Buying fibre from Colt means you're in safe hands. Our extensive wholly-owned network is supported 24/7 by over 5000 employees globally, across 28 countries

## Futureproof, Scalable Networking

As IT continues to converge on the data centre and bandwidth requirements increase, the demands on your network continue to grow. To meet this demand, many organisations are now choosing to integrate Dark Fibre into their network topology. A Dark Fibre network from Colt provides reliable and secure optical infrastructure to enable you to self-manage critical elements of your network. Dark Fibre provides your business with maximum levels of flexibility and control to support virtually unlimited bandwidth increases - at a time and pace to suit you.

### Network Design Agility

From simple, metro point-to-point fibre pairs, to complex bespoke longhaul services - Colt is able to create a physical network designed to address the needs of your business.

Experience gained in operating fibre optic networks for more than 20 years has given us the expertise to design, build and manage mission-critical Dark Fibre networks for many of the world's leading organisations. Our customers enjoy access to our unique and geographically diverse network resources - providing unrivalled potential for future network expansion.

We understand the importance of geographic route diversity, and our design consultants are able to create diverse fibre ring topologies - or offer assured route diversity from other carriers.

### Network Transformation - Colt Private Wave

Operating a network based on Dark Fibre network can be operationally complex. Colt can help ease network transformation initiatives by providing managed DWDM solutions for individual Dark Fibre segments where required. Colt Private Wave services are based on the same dedicated and secure Dark Fibre - but with the added benefit of Colt's 24/7 service management and maintenance expertise for your optical transmission equipment. We're able to integrate both Services to provide maximum levels of flexibility.

### Technical specifications

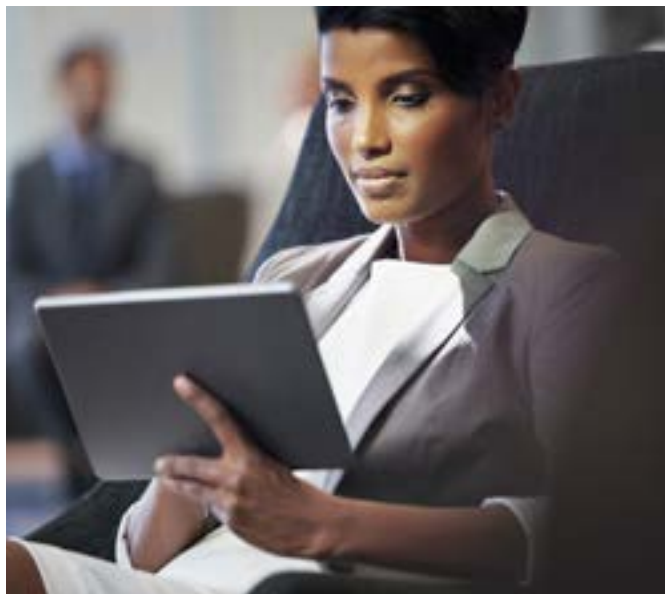
Our metro Single Mode Fibre (SMF) is 100% ITU G.652 compliant, and our longhaul fibre is compliant to ITU G.655 (LEAF). In Asia, we are able to provide G.653 fibre.





Colt performs characterisation for all Dark Fibre network segments using OTDR (Optical Time-Domain Reflectometer) equipment – results are available on request. Chromatic Dispersion and Polarisation Mode Dispersion (CD/PMD) testing for longhaul fibre is available on request (additional charges may apply).

Splicing is kept to a minimum, and fusion splicing is used in all cases. Colt routinely re-splices up to three times to achieve desirable levels of attenuation.



## About Colt

Colt aims to be the leader in enabling customers' digital transformation through agile and on-demand, high bandwidth solutions. The Colt IQ Network connects 850+ data centres across Europe, Asia and North America's largest business hubs, with over 27,500 on net buildings and growing.

Colt has built its reputation on putting customers first. Customers include data intensive organisations spanning over 213 cities in over 30 countries. Colt is a recognised innovator and pioneer in Software Defined Networks (SDN) and Network Function Virtualisation (NFV). Privately owned, Colt is one of the most financially sound companies in its industry and able to provide the best customer experience at a competitive price. For more information, please visit [www.colt.net](http://www.colt.net)

For more information,  
please contact us on:

**+44 (0)20 7863 5510**  
**[sales@colt.net](mailto:sales@colt.net)**  
**[www.colt.net](http://www.colt.net)**