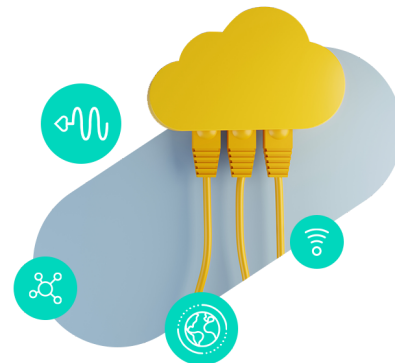


On Demand



Benefits at a glance

✔ **Colt On Demand Services represents**

A genuine breakthrough for enterprises that need fully flexible connectivity solutions between Data Centres, Cloud Service Providers and Enterprise buildings.

✔ **Gain control over your**

Network with our feature rich self service portal.

✔ **Benefit from real-time service provisioning**

Say goodbye to long delivery times.

✔ **Flexible commercial models**

Choose from long term fixed contracts or per hour billing with no commitment.

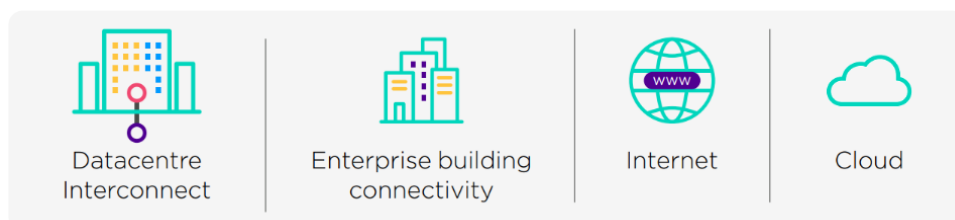
✔ **Dynamically scale**

Dynamically scale up or down your bandwidth in line with demand.

✔ **Connect to the cloud**

With a network offering that can match the cloud experience.

Achieve real-time and scalable control of your network connectivity



Achieve real-time and scalable control of your network connectivity

Cloud computing is fast becoming a significant part of your global IT strategy to get well known benefits: flexibility, scalability and cost efficiency. However your IT is only as good as the quality of its connections and you know that re[?]architect networks is slow, costly and complex. But Colt has changed that. With Colt On Demand Services, we give you control over your network and enable you to provision the connections you need in real-time. Colt is helping to redefine the future of the telecoms industry. Our On Demand platform leverages state of the art SDN (Software Defined Networking) and NFV (Network Function Virtualisations) technologies.

On Demand Portal

We give you access to your own dedicated On Demand customer portal, transforming the user experience by delivering self-service capabilities for real-time ordering, provisioning and service flexing. Through the On Demand Portal, services are based on ports and connections. To request a new service is just a few clicks away. Once free ports have been reserved and ordered, the On Demand Portal bypasses the traditional telco delivery process and delivers connections within minutes. Once you have created your connection you can make modifications to your bandwidth in real time to meet your business requirements, with full tracking and reporting available. Not only can you connect to Colt locations, you can now connect to millions of enterprise office buildings across 180+ countries serve via our carrier partners.

Colt Solutions

Colt has several on-demand solutions to connect your ICT services easier and faster – even if they are in different cities or countries. Our service gives you dedicated, high-performance and scalable Ethernet and Internet between any of your sites – data centres, enterprise buildings or access points into public cloud providers such as Amazon Web Services, Microsoft Azure, Google Cloud Platform, IBM Cloud, Oracle Cloud, OVHcloud and Alibaba Cloud. As a result, all your IT services, business-critical or not, can work together seamlessly and be up running in minutes.

Simple yet powerful, scalable connectivity

Colt's On Demand Services connect your business at scale. Select from our portfolio of flexible bandwidth solutions for use cases such as enterprise connectivity, cloud computing, disaster recovery, business continuity planning, content delivery, applications and host of other remotely-based IT services. In four easy steps, you can create your network from the ground up, or build upon your existing footprint.



Step 1 -
Login to portal



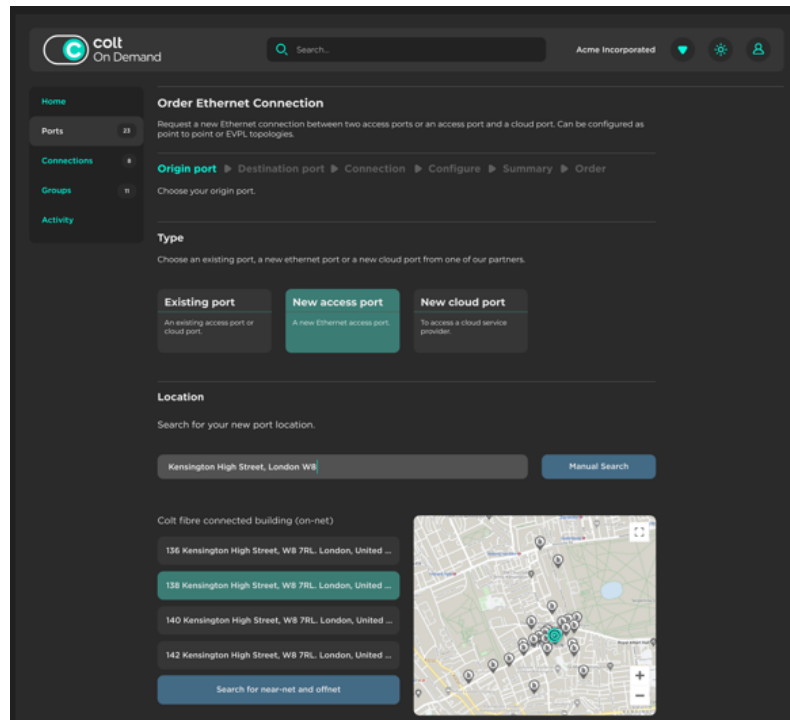
Step 2 -
Reserve / release
ports



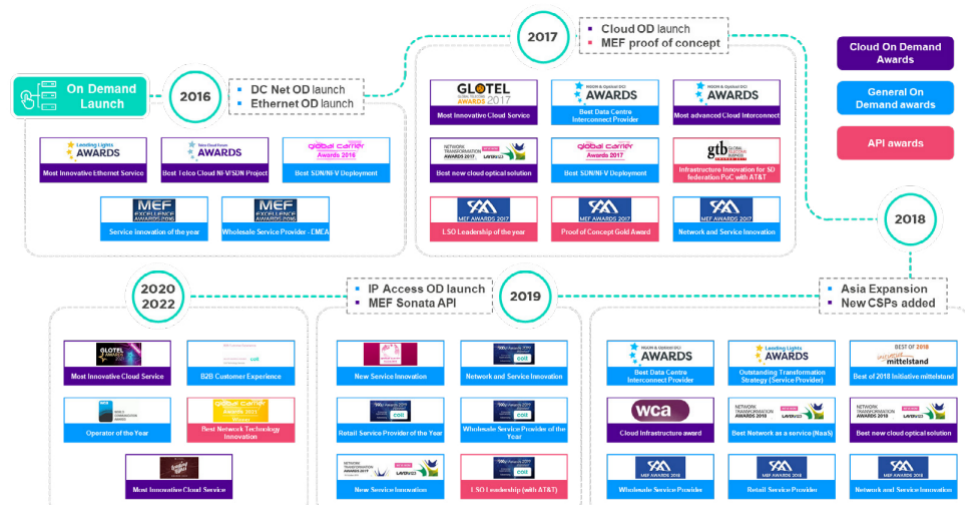
Step 3 -
Create / delete a
connection



Step 4 -
Modify bandwidth
in real time



Award Winning Features



Service Features

- Extensive coverage in Europe, Asia and USA: Over 95% of Colt's footprint is enabled for On Demand services, spanning: 1000+ data centres and more than 32,000+ enterprise buildings.
- Key cloud partners including: Amazon Web Services, Microsoft Azure, Google Cloud Platform, IBM Cloud and Oracle Cloud.
- Select scalable bandwidth up to 20 Gbps and then flex up or down as you need in real time.
- High quality network connectivity including service availability with comprehensive carrier grade SLA.
- Connect to millions of enterprise office buildings across 180+ countries via our carrier partner.
- Connections can be completed and modified in real-time.
- Pay-as-you-go billing with a flexible rolling monthly contract.