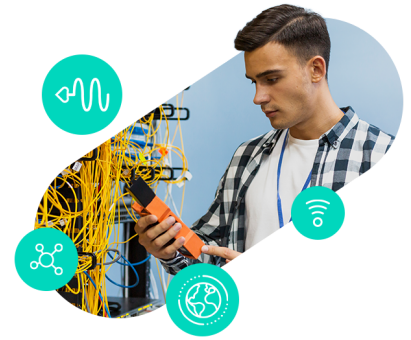


Colt Global IP Transit Service



Benefits

✓ Efficiently support your growing business with Colt's scalable architecture and robust connectivity

AS3356: is the most extensively peered global network*, ensuring optimal routing and reach
AS8220: offers seamless interconnectivity across North America and Asia, enabling global coverage with extensive peering ecosystem supporting high-capacity traffic exchange with minimal latency

✓ Flexible capabilities to meet your IP Transit demands

Scalable bandwidth options up to 400Gb
Native IPv4/IPv6 dual-stack with a global pool of IPv4 addresses
Support for BGP communities, route filtering, and customer-specific routing policies

✓ Protect your business and users with Colt's advanced network security

Integrated RPKI-based Route Origin Validation to prevent route hijacking (check)
Add on IP Guardian services for critical infrastructure protection
24/7 network monitoring and incident response from Colt's global Network Operations Centers (NOCs)

Built for performance. Powered by experience

We understand that the quality of the internet experience depends on the strength of the underlying network. Colt's global IP Transit service is engineered to deliver reliable, scalable, and high-performance connectivity for service providers and enterprises worldwide.

Our IP backbone architecture is built on two complementary AS networks with terabit interconnectivity:

- AS3356, our Transit free backbone delivering extensive coverage and deep peering across EMEA, and
- AS8220, a highly connected, strategically peered network delivering performance and reach across North America and Asia.

Together, they provide global coverage, optimal routing, and consistent low-latency transit —backed by sophisticated network security, scalable port options, and real-time monitoring. With Colt, customers benefit from a globally integrated transit solution built for critical business and carrier-grade demands.

Common use cases

- Regional ISPs with 'eyeballs' consuming digital content
- Content providers to deliver content to regional ISPs
- Hosting providers needing IP transit for their customer assets
- Video game companies looking to optimize end-user experience

Highlights

Global connections

More than 60% of traffic that originates on our network terminates on our network

Secure routing

Protect your traffic with router filtering, Resource Public Key Infrastructure (RPKI) for Route Origin Validation and Remote Trigger Black Hole Filtering

Streamlined operations

Flexible access, bandwidth, and billing options with services backed by comprehensive SLAs to accommodate your changing business needs

High performance

Internet bandwidth that is dedicated to your business, supporting real-time applications like video and voice. As a vastly connected internet service provider (ISP), you can reach destinations fast with fewer hops utilizing the AS3356

Why Colt

Our IP Services combine proven performance with global internet reach and scalability. We operate a vast IP backbone enabling us to offer customers proven service, even for standard requirements. From low to high speeds, our IP services are designed to deliver maximum performance in virtually any location.

Features and Specs

Access options

- Cross connection
- Wavelengths
- Dark Fibre

Port interfaces

- Scalable ports, providing speeds of 10GbE to 400GbE across EMEA, North America and APAC
- 10GIG-E
- 100GIG-E
- 400GIG-E

Flexible billing options

- Flat rate: Fixed MRC for the Peak Data Rate (PDR), bursting not available
- Usage Based Billing: Fixed MRC for the Committed Data Rate (CDR), burst charge based on P95 usage in excess of the CDR
- Billing arrangement: Fixed MRC for the Aggregate Committed Data Rate (ACDR), burst charge based on P95 usage across multiple ports in excess of the ACDR